

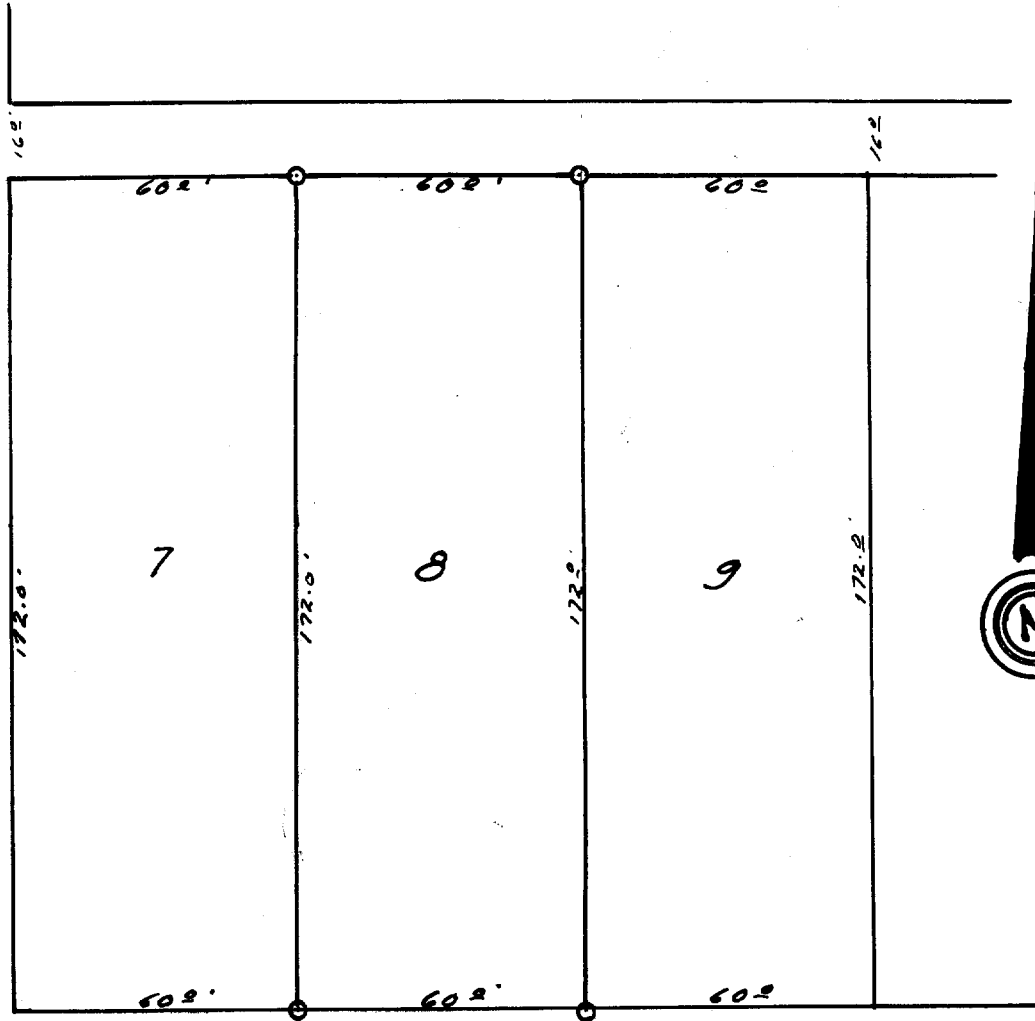
52-26

03240

66.2'

ST.

51 G E



WALWORTH

ST.

DESCRIPTION:

Lot 8 Block 18 Geneva Lake Crawford Manufacturers Company
Addition to the City of Lake Geneva Walworth County, Wisconsin.

CERTIFICATE:

This is to certify that I have on this the 3rd day of
July 1952, surveyed the above described property, and that
the above portrayed plat is a true and correct reproduction
of said survey.
SIGNED AND SEALED ON THIS THE 7TH DAY OF JULY 1952.

Joseph M. Bl...
Professional Engineer
Elkhorn Wisconsin.

808-54

200-97

7
-90 B